

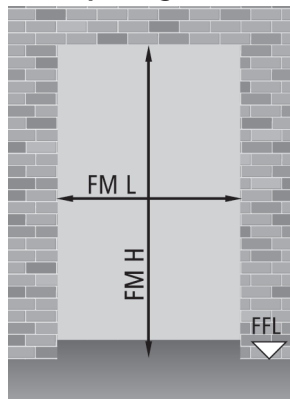
Order measurements

PROGET Fire doors

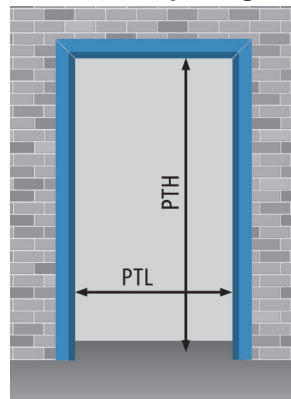
NINZ
FIRE DOORS

ORDER MEASUREMENTS

Wall opening



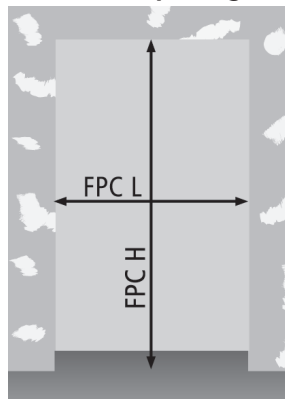
Doorframe opening



$$PTL = FM L - 80$$

$$PTH = FM H - 40$$

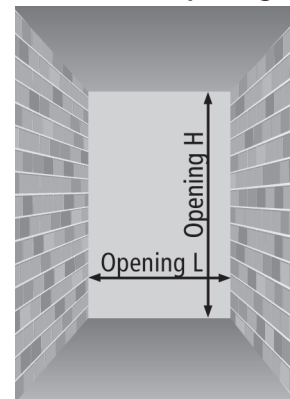
Lightweight constructions wall opening



$$FPC L = FM L - 25$$

$$FPC H = FM H - 12$$

Block frame opening



$$\text{Opening L} = FM L + 70$$

$$\text{Opening H} = FM H + 35$$

NOTE

The wall openings to be created for the embracing frame or the block frame for in the reveal application, do not correspond to the order measurement and therefore should follow the above specifications.

One-leaved doors

FM L x FM H		PT L x PT H (doorframe opening)				fire-rating	
standard dimensions		frame on 3 sides		frame on 4 sides		class	
800	x 2000 / 2050 / 2100 / 2150 / 2200	720	x 1960 / 2010 / 2060 / 2110 / 2160	720	x 1940 / 1990 / 2040 / 2090 / 2140	EI ₂ 60, EI ₂ 120, REI 60, REI 120	
900	x 2000 / 2050 / 2100 / 2150 / 2200	820	x 1960 / 2010 / 2060 / 2110 / 2160	820	x 1940 / 1990 / 2040 / 2090 / 2140	EI ₂ 60, EI ₂ 120, REI 60, REI 120	
1000	x 2000 / 2050 / 2100 / 2150 / 2200	920	x 1960 / 2010 / 2060 / 2110 / 2160	920	x 1940 / 1990 / 2040 / 2090 / 2140	EI ₂ 60, EI ₂ 120, REI 60, REI 120	
1100	x 2050 / 2100 / 2150 / 2200	1020	x 2010 / 2060 / 2110 / 2160	1020	x 1990 / 2040 / 2090 / 2140	EI ₂ 60, EI ₂ 120, REI 60, REI 120	
1200	x 2050 / 2100 / 2150 / 2200	1120	x 2010 / 2060 / 2110 / 2160	1120	x 1990 / 2040 / 2090 / 2140	EI ₂ 60, EI ₂ 120, REI 60, REI 120	
1300	x 2000 / 2050 / 2100 / 2150 / 2200	1220	x 1960 / 2010 / 2060 / 2110 / 2160	1220	x 1940 / 1990 / 2040 / 2090 / 2140	EI ₂ 60, EI ₂ 120, REI 60, REI 120	
1340	x 2050 / 2100 / 2150 / 2200	1260	x 2010 / 2060 / 2110 / 2160	1260	x 1990 / 2040 / 2090 / 2140	EI ₂ 60, EI ₂ 120, REI 60, REI 120	
non-standard dimensions							
from 670 to 1340	x from 1950 to 2600	from 590 to 1260	x from 1910 to 2560	from 590 to 1260	x from 1890 to 2540	EI ₂ 60	
from 710 to 1340	x from 1900 to 2640	from 630 to 1260	x from 1860 to 2600	from 630 to 1260	x from 1840 to 2580	EI ₂ 120	
from 546 to 1340	x from 1775 to 2670	from 466 to 1260	x from 1735 to 2630	from 466 to 1260	x from 1715 to 2610	REI 60, REI 120 anchor fixing	
from 546 to 1170	x from 1775 to 2275	from 520 to 1090	x from 1735 to 2235	from 520 to 1090	x from 1715 to 2215	REI 60, REI 120 embracing frame	
from 1004 to 1340	x from 2050 to 2500	from 924 to 1260	x from 2010 to 2460	from 924 to 1260	x from 1990 to 2440	REI 60, REI 120 embracing frame	
from 546 to 1170	x from 1775 to 2275	from 520 to 1090	x from 1735 to 2235	from 520 to 1090	x from 1715 to 2215	REI 60, REI 120 subframe or expansion screw	
from 1004 to 1340	x from 2050 to 2500	from 924 to 1260	x from 2010 to 2460	from 924 to 1260	x from 1990 to 2440	REI 60, REI 120 subframe or expansion screw	

Order measurements - Handle height

PROGET Fire doors

NINZ
FIREDOORS

PROGET
fire doors

Two-leaved doors FM L x FM H

standard dimensions				PT L x PT H	fire-rating
				doorframe opening	class
1150	(800 + 350)	x	2000 / 2050 / 2100 / 2150 / 2200	1070 x 1960 / 2010 / 2060 / 2110 / 2160	EI,60, REI 60, REI 120
1200	(800 + 400)	x	2000 / 2050 / 2100 / 2150 / 2200	1120 x 1960 / 2010 / 2060 / 2110 / 2160	EI,60, REI 60, REI 120
1250	(800 + 450)	x	2000 / 2050 / 2100 / 2150 / 2200	1170 x 1960 / 2010 / 2060 / 2110 / 2160	EI,60, REI 60, REI 120
1250	(900 + 350)	x	2000 / 2050 / 2100 / 2150 / 2200	1170 x 1960 / 2010 / 2060 / 2110 / 2160	EI,60, REI 60, REI 120
1300	(900 + 400)	x	2000 / 2050 / 2100 / 2150 / 2200	1220 x 1960 / 2010 / 2060 / 2110 / 2160	EI,60, REI 60, REI 120
1350	(900 + 450)	x	2000 / 2050 / 2100 / 2150 / 2200	1270 x 1960 / 2010 / 2060 / 2110 / 2160	EI,60, REI 60, REI 120
1350	(1000 + 350)	x	2000 / 2050 / 2100 / 2150 / 2200	1270 x 1960 / 2010 / 2060 / 2110 / 2160	EI,60, REI 60, REI 120
1400	(1000 + 400)	x	2000 / 2050 / 2100 / 2150 / 2200	1320 x 1960 / 2010 / 2060 / 2110 / 2160	EI,60, REI 60, REI 120
1450	(1000 + 450)	x	2000 / 2050 / 2100 / 2150 / 2200	1370 x 1960 / 2010 / 2060 / 2110 / 2160	EI,60, REI 60, REI 120
1600	(800 + 800)	x	2000 / 2050 / 2100 / 2150 / 2200	1520 x 1960 / 2010 / 2060 / 2110 / 2160	EI,60, EI,90, REI 60, REI 120
1700	(900 + 800)	x	2000 / 2050 / 2100 / 2150 / 2200	1620 x 1960 / 2010 / 2060 / 2110 / 2160	EI,60, EI,90, REI 60, REI 120
1800	(900 + 900)	x	2000 / 2050 / 2100 / 2150 / 2200	1720 x 1960 / 2010 / 2060 / 2110 / 2160	EI,60, EI,90, REI 60, REI 120
1800	(1000 + 800)	x	2000 / 2050 / 2100 / 2150 / 2200	1720 x 1960 / 2010 / 2060 / 2110 / 2160	EI,60, EI,90, REI 60, REI 120
1900	(1000 + 900)	x	2000 / 2050 / 2100 / 2150 / 2200	1820 x 1960 / 2010 / 2060 / 2110 / 2160	EI,60, EI,90, REI 60, REI 120
2000	(1000 + 1000)	x	2000 / 2050 / 2100 / 2150 / 2200	1920 x 1960 / 2010 / 2060 / 2110 / 2160	EI,60, EI,90, REI 60, REI 120

non-standard dimensions

from 890 (540 + 350) to 2540 (1270 + 1270)	x	from 1775 to 2600	from 810 to 2460 x from 1735 to 2560	EI,60
from 1175 (600 + 575) to 2540 (1270 + 1270)	x	from 1775 to 2300	from 1095 to 2460 x from 1735 to 2260	EI,90
from 1175 (600 + 575) to 2500 (1250 + 1250)	x	from 2301 to 2500	from 1095 to 2420 x from 2261 to 2460	EI,90
from 1175 (600 + 575) to 2380 (1200 + 1180)	x	from 2501 to 2630	from 1095 to 2300 x from 2461 to 2590	EI,90
from 890 (540 + 350) to 2540 (1270 + 1270)	x	from 1775 to 2670	from 810 to 2460 x from 1735 to 2630	REI 60, REI 120 anchor fixing
from 890 (540 + 350) to 2298 (1164 + 1134)	x	from 1775 to 2275	from 810 to 2218 x from 1735 to 2235	REI 60, REI 120 embracing frame
from 1962 (996 + 966) to 2540 (1270 + 1270)	x	from 2050 to 2500	from 1882 to 2460 x from 2010 to 2460	REI 60, REI 120 embracing frame
from 890 (540 + 350) to 2298 (1164 + 1134)	x	from 1775 to 2275	from 810 to 2218 x from 1735 to 2235	REI 60, REI 120 subframe or expansion screw
from 1962 (996 + 966) to 2540 (1270 + 1270)	x	from 2050 to 2500	from 1882 to 2460 x from 2010 to 2460	REI 60, REI 120 subframe or expansion screw

NOTE

The following doors are equipped with a CP1 door closer:

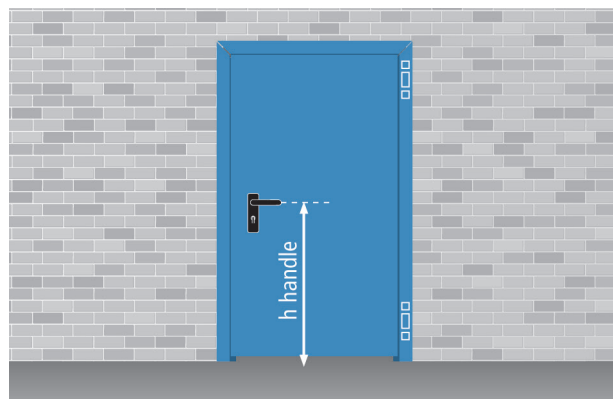
- EI₂90 2 leaves: from 2271 to 2540 x from 2151 to 2300
from 1801 to 2500 x from 2301 to 2500
from 1801 to 2380 x from 2501 to 2630
- EI₂120 1 leaf: from 1126 to 1340 x from 2301 to 2500
from 901 to 1340 x from 2501 to 2640
- REI 120 1 leaf: from 1126 to 1340 x from 2301 to 2500
from 901 to 1340 x from 2501 to 2670
- 2 leaves: from 1126 to 1270 x from 2151 to 2300
from 901 to 1270 x from 2301 to 2670

HANDLE HEIGHT

One-leaved door

h = 1050 (FM H ≥ 1750)

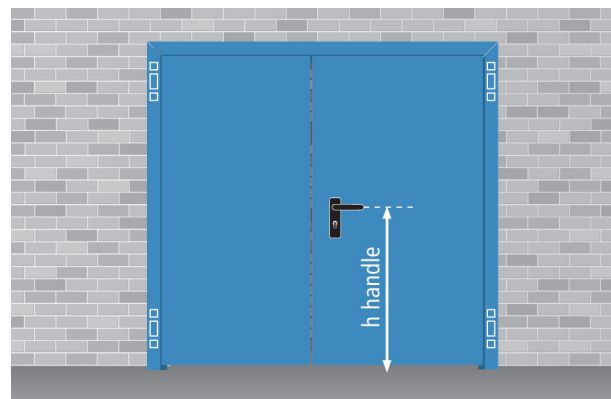
Different heights available upon request only



Two-leaved door

h = 1050 (FM H ≥ 1750)

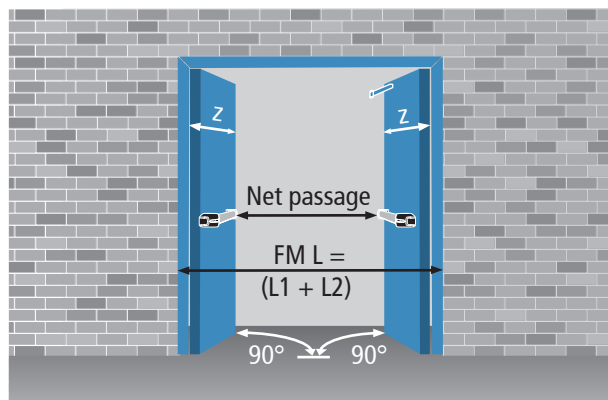
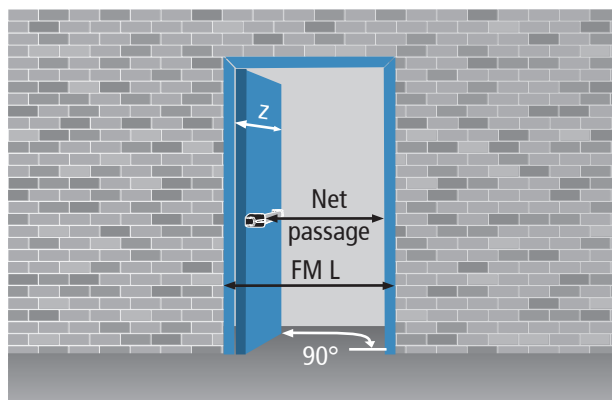
Different heights available upon request only



PROGET fire doors

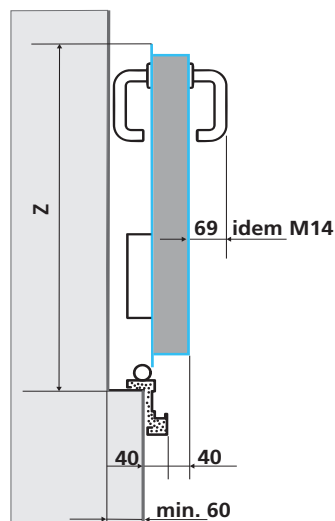
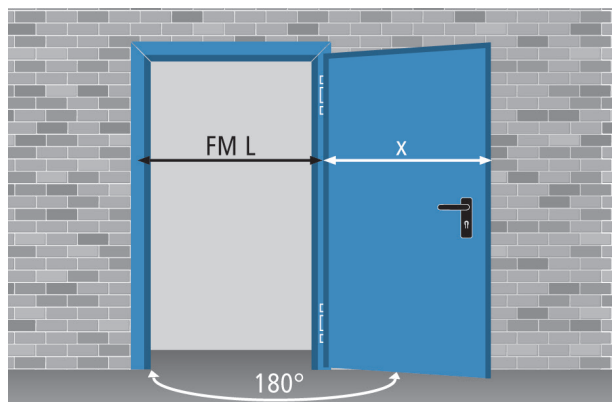
NINZ
FIREDOORS

PROGET
fire doors

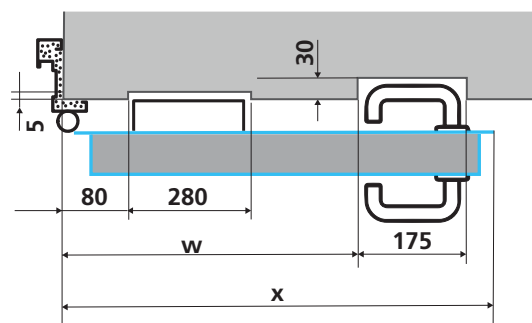
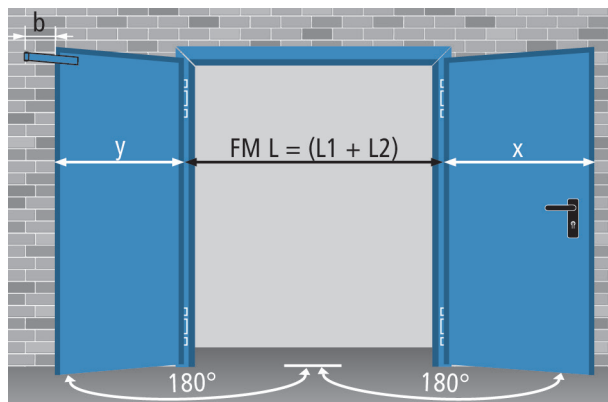


panic bar type	protrusion	one-leaved door	two-leaved door	one-leaved door with block frame	two-leaved door with block frame
EXUS	125	FML - 245	FML - 410	Opening - 315	Opening - 480
TWIST	100	FML - 220	FML - 360	Opening - 290	Opening - 430
SLASH	75	FML - 195	FML - 310	Opening - 265	Opening - 380
FAST TOUCH	75	FML - 195	FML - 310	Opening - 265	Opening - 380
without panic bar	-	FML - 120	FML - 160	Opening - 190	Opening - 230
z = leaf protrusion relative to the wall		FML + 27	EI,60, REI 60, REI 120 = L1 + 35, L2 + 75; EI,90 = L1 + 67, L2 + 75		

x = FML - 7



El₂60, REI 60, REI 120: $x = L1 + 1$; El₂90: $x = L1 + 33$; $y = L2 + 42$
 $b = \max. 130$ (only in the presence of a panic bar or M14 handle)



Specific optional accessories

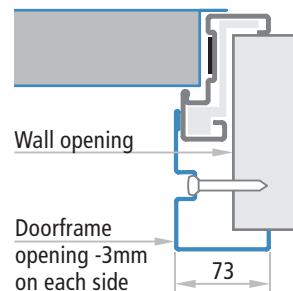
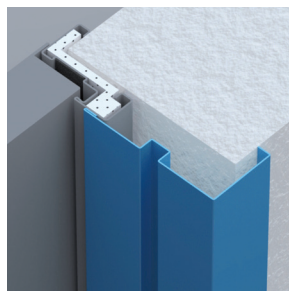
PROGET Fire doors



FRAME EXTENSIONS FOR PROGET DOORS

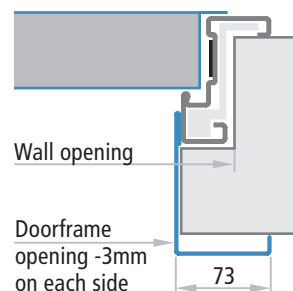
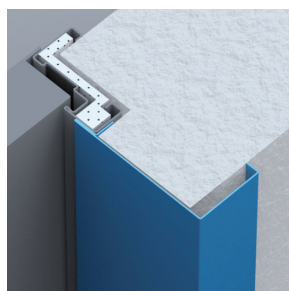
IM 1

Frame extension to be mounted in addition to the Proget frame to serve as embracing frame made of "Sendzimir" processed hot-galvanized sheet metal and painted the same color as the doorframe with epoxy-polyester powders. Profile on three sides, upper corners with 45 degree joint, fixing with screws and plugs in groove (screws and plugs not included).



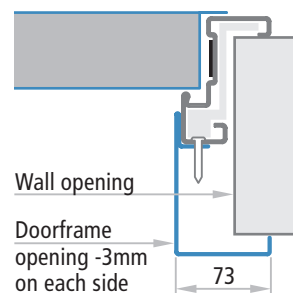
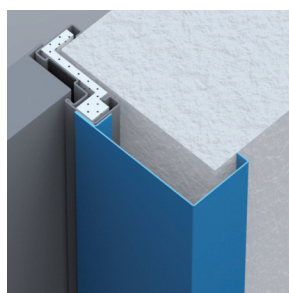
IM 3

Frame extension to be mounted in addition to the Proget frame to serve as embracing frame, especially for EI₂90, EI₂120 with installation for expansion screws fixing. Made of "Sendzimir" processed hot-galvanized sheet metal and painted the same color as the doorframe with epoxy-polyester powders. Profile on three sides, upper corners with 45 degree joint, fixing with screws and plugs (screws and plugs not included).



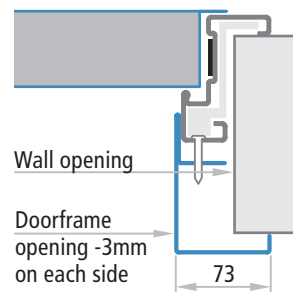
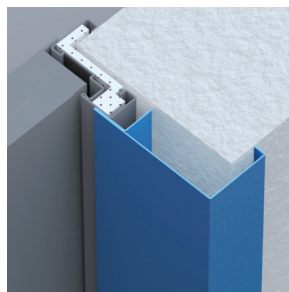
IM 4

Frame extension to be screwed to the Proget doorframe acting as a wall cladding. Made of "Sendzimir" processed hot-galvanized sheet metal painted the same color as the doorframe with epoxy-polyester powders. Profile on three sides, upper corners with 90 degree joint. Complete with fastener screws. To mount the frame extension, pre-drilled holes are available on the frame. Combine with sealing to conceal the screw heads.



IM 5

Telescopic frame extension to be screwed to the Proget doorframe acting as a wall cladding for expansion screw fixing. Consists of two overlapping profiles with a 25mm adjustable range. Made of "Sendzimir" processed hot-galvanized sheet metal painted the same color as the doorframe with epoxy-polyester powders. Profile on three sides, upper corners with 90 degree joint. Complete with fastener screws. To mount the frame extension, pre-drilled holes are available on the frame. Combine with sealing to conceal the screw heads.



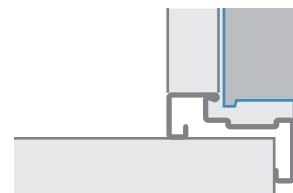
FRAME ON FOUR SIDES

Upon request one-leaved Proget doors may be supplied with frames on four sides and leaves with or without lower rebate. These type of doors are used mainly for technical rooms or shafts.

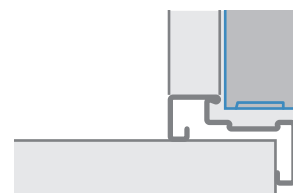
The frame on four sides is not available for the following applications: doors installed onto escape routes, two-leaved doors, doors with environmental characteristics, application on lightweight constructions, in combination with frame extensions.

ATTENTION

With the frame on four sides, the center of the handle will be 15 mm higher than the standard position. For more details, see the page "Door cross section - Measurements".



Leaf with lower rebate



Leaf without lower rebate